

Bretherton Energy Partnership

Bi-Monthly Update – December 2022

1. Introduction

GA are circulating this third bi-monthly update to all those who attended the launch of “Our Mutual Journey to Net Zero” at Plocks Farm on 20th May 2022, to keep you fully informed as to what is happening.

This is an update note produced by GA, and confirms the position as GA understands it to be, and does not purport to be the views of any other party.

2. Working Party of Bretherton Parish Council - Consultation

The Working Party are undertaking their consultation of the proposal. The website www.brethertonenergy.co.uk has been amended to better explain the proposal, and how Bretherton residents will receive and be charged for the consumption at the lower and market rates of charges.

The use of the website is to inform residents of the proposal, and to support a paper-based questionnaire that will be hand delivered to residents to complete. On completion of the questionnaire the results will be collated and assessed, with a report circulated to residents for their information.

3. Tree Planting

During Winter 2022, a tree and shrub planting scheme will be undertaken in the areas shaded green and yellow on the plans shown at the end of this update. This will hopefully allow these areas of planting to become established and start to screen any potential solar panels from immediate view.

4. Lidar – Wind Direction Speed and Direction

A wind speed and direction unit has been installed on the site. This comprises a laser beam projected into the sky, which is able to accurately measure wind speed and direction of small particles as they cross the sky.

This monitoring will assist in assessing the wind viability of the site, and working in conjunction with noise measurement. This work will help to determine the noise generated by the turbine on the windiest days in order to assess required and appropriate noise mitigation

5. Assessments Update

We update the current position on the ongoing assessments: -

i) Ecology – Wild Bird Survey – Winter Ground Feeding

The winter bird feeding survey is ongoing, with both Geese and Bewick Swans being sighted on the site, during the visits. The survey is being undertaken by Avian Ecology who has also included potential mitigation sites in Scarisbrick and Hesketh Bank within their survey. The initial survey will be completed in April/May 2023, with this continuing for a second year during 2023/24.

ii) Culture and Heritage Assessment

Pegasus Heritage specialists have inspected the site and surrounding area, and will be preparing a report, assessing the impact of the proposal on the Heritage assets, which will be circulated via the Bretherton Energy website.

iii) Flood Risk Assessment

A flood risk assessment has been completed; this is available at www.brethertonenergy.co.uk under the Resources tab.

iv) Aviation Risk Assessment

Pager Power have updated their report following consultation responses from Blackpool Airport, a full copy is available at www.brethertonenergy.co.uk.

v) Telecommunication Link Assessment

Following further consultation with specialists acting for Electricity North West, who currently hold a licence for a point-to-point telecommunication link that crosses the site. Electricity North West have indicated the telegraphic link may be removed within the next year or so. It has therefore been decided to defer any further assessment until the timetable for the development is more certain.

vi) Battery Storage Options for Bretherton Residents

A battery storage report has been produced by StorTera, a specialist battery supplier based in Edinburgh. The report contains a high-level design for the storage arrangements needed at the two Bretherton substations, requiring the provision of a low voltage supply being charged using the Asland Walks generation at 11kW.

The simulation model used concludes that a total battery capacity of 2mWh would be sufficient, but it was not possible to provide 100% of the needs due to the seasonal variations in the renewable generation. Various sizes were modelled, and it concluded that a 4mWh battery was not economically viable.

The battery system proposed predicts day ahead consumption needs, to better prepare the battery for the needed Bretherton demand. A copy of the report is available under the Resources tab at www.brethertonenergy.co.uk.

6. Conclusion

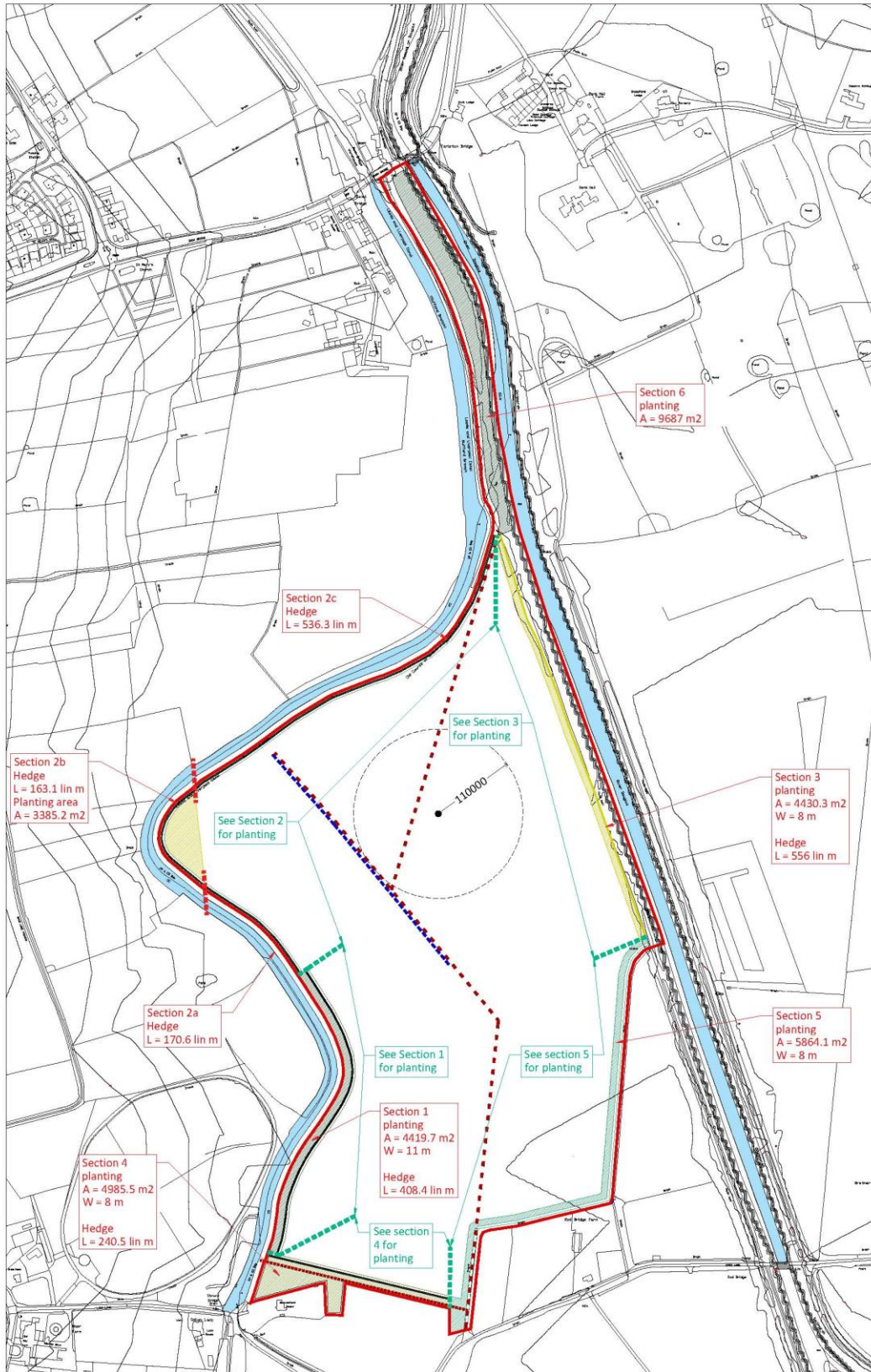
All parties continue to work to advance “Our Mutual Journey to Net Zero”, but with considerable further assessments yet to do.

The reports are made available at www.brethertonenergy.co.uk under the Resources Tab. However, National Planning Policy still remains a fundamental barrier to the scheme.

We will send another update in February 2023.

All dimensions to be checked on site.
 Figured dimensions to be read in preference to scaled.
 BCAL accepts no responsibility for any unauthorised amendments to the drawing and does not permit unauthorised copying of the drawing.
 This drawing is copyright and remains the property of BCAL unless otherwise agreed.

Revision	Description	By	On
1	Initial issue	CM	03/10/2022



INFORMATION

Enercon elevation drawing hybrid steel tower (ref E-138 EP3 E3HST 131-FB-01)

Tower height	125.90m
Hub Height	130.64m
Top of Nacelle (height)	134.93m
Max height to tip of blade	199.76m

Client	GA Pet Food Partners Ltd
Job title	Asland Walks Green Energy
Drawing title	Preliminary Landscape Planting Areas - simplified

Scale	1:5000 @ A3
Project number	22.522

Created by	CM
Drawing number	203

Last edited by	MITCHELL.C
Issue	11

Date	October 2022
-------------	--------------

Checked	TH

19 OLD HALL STREET
 LIVERPOOL
 L3 9JG
 TELEPHONE +44 (0)151 242 6161
 FACSIMILE +44 (0)151 236 4467
 EMAIL office@bcalandscape.co.uk
 WEB SITE www.bcalandscape.co.uk

BCA Landscape